

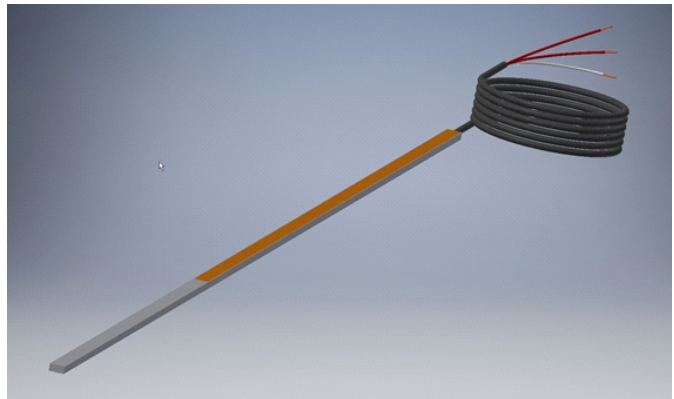
## Sensor Technology Pt100 Slot Sensor Stator Winding



The Slot temperature sensor is developed to measure the temperature of electrical-mechanical machines. It is inserted in grooves strategically located to protect the equipment from the overheating and to avoid electromagnetic interference in this type of machinery.

This kind of sensor has two types: Core winding and Stator winding applications.

The special features of this thermoresistive sensor are: accuracy, response time, large sensitive area and low drift.



# Pt100 Slot Sensor Stator Winding

## General Information

Application: Sensor Core Winding and Stator Winding  
Temperature Monitoring

## Extension Cables

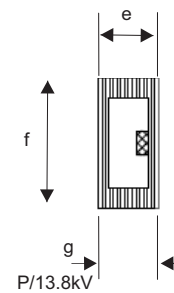
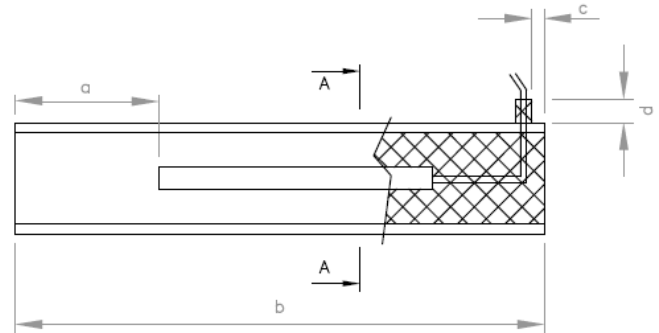
Raw material: Tinned Copper  
Diameter: 3x20 AWG or according to customer requirements  
Insulation material / color : Teflon / ( White / Red / Red ) /  
(Yellow / Black / Black)  
Lenght: According to customer requirements

## Sensor

Type: Pt-100  
Standard: DIN IEC 751 class B or class A  
Calibration: 100 @ 0°C  
Insulation material: Glass Fiber / Epoxy Resin Temperature  
Class F  
Dimensions: According to Customer requirements  
Conection: 2 / 3 or 4 Conductor per cable or Single wires  
Sensor element: Single or double  
Temperature calibration X Resistance at 0 and 100°C  
Voltage test: 2500 VAC ( 60 Hz ) X 1 min. According to  
Customer requirements

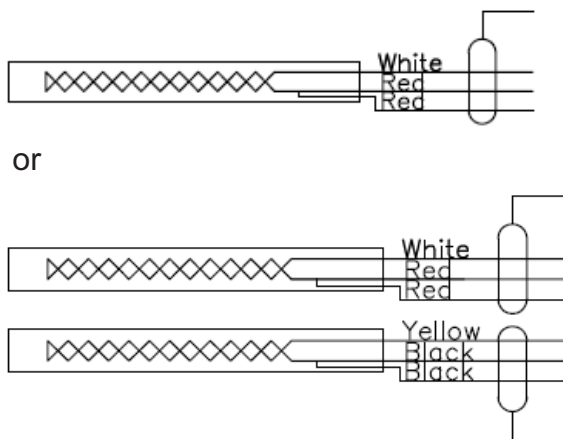
## Dimensions:

Dimensions mm  
a b c d e f g



Section: A - A

## Connection Scheme



## Example:

